

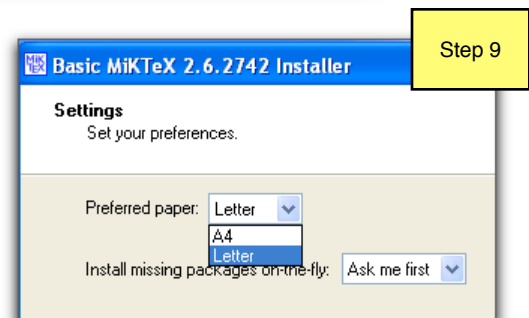
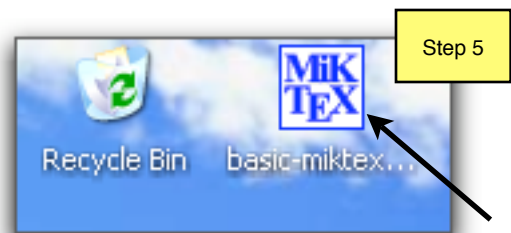
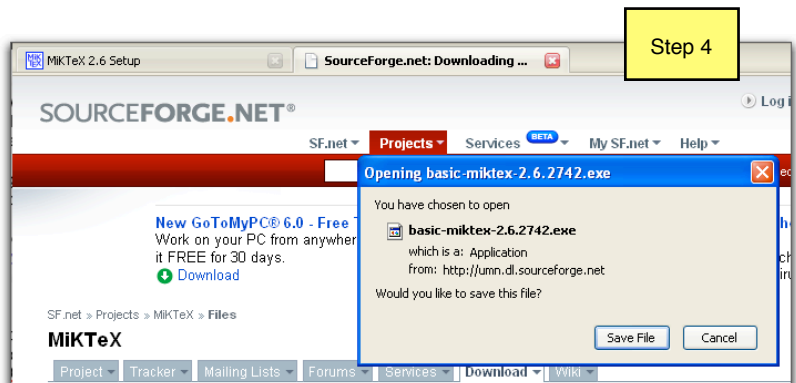
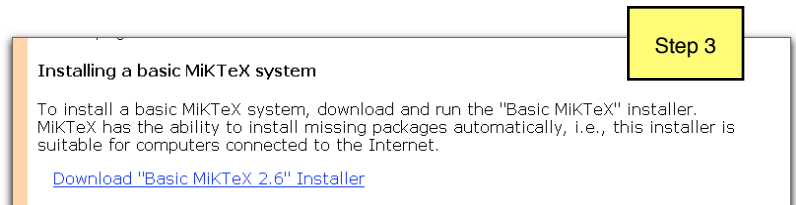
Download and Installation Guide for MiKTeX and TeXNicCenter

This document provides detailed instructions on downloading and installing MiKTeX and TeXNicCenter, two pieces of software you need in order to use the LaTeX typesetting package. You will need to be connected to the Internet to get the software; a high-speed connection is preferred.

If you are running an operating system other than Microsoft Windows, please see Prof. Talbert for instructions.

Part 1: Download and Install MiKTeX

1. Go to <http://www.miktex.org>.
2. In the menu on the left side of the screen, place the cursor over the link called Install MiKTeX. There will be a popup window that comes up; from this window, choose MiKTeX 2.6. (If this doesn't work for you, just enter in <http://miktex.org/2.6/Setup.aspx> to your web browser.)
3. Scroll a little more than halfway down the screen until you see the link **Download "Basic MiKTeX 2.6" Installer**. Click on this link.
4. You will be taken to a website where the installer program is located, and you will get a popup window as pictured. Select "Save File". This will download the installer to your local hard drive.
5. Locate the installer program (it is most likely on your Desktop). Double-click the icon to start the installer. Note: It may take a rather long moment for the installation process to begin after you double-click. Just be patient.
6. Click on the box to accept the MiKTeX copying conditions. Click **Next**.
7. Click **Next** again (this will install MiKTeX for all users on your system, not just the administrator).
8. Click **Next** again to choose the default directory for installation. (If you want a different directory, click Browse and select the one you want.)
9. Change **Preferred Paper** from **A4** to **Letter**. Then

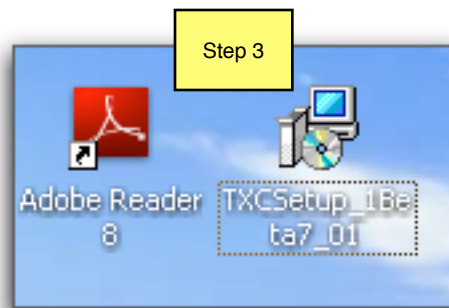


click **Next** again.

10. Click **Start** to begin the install process. The installation will take a 2-3 minutes, longer if you are on a slower internet connection. The install program is fetching all the necessary components of the software from various internet sites and copying them to your hard drive.
11. When you are able to click the **Next** button, do so. This will give you a screen telling you the installation process is complete.

Part 2: Download and Install TeXNicCenter

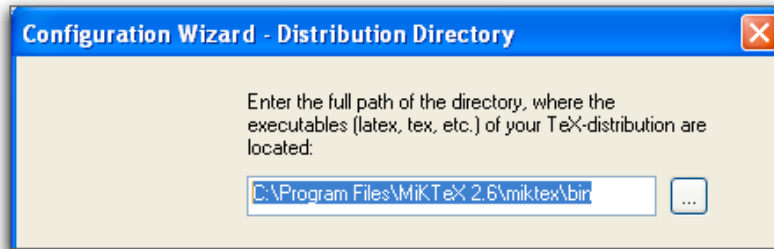
1. Go to <http://www.toolscenter.org/downloads.html> and find TeXNicCenter Setup at the top of the table in the middle of the page. Click on the link next to the name of the file in that table.
2. You'll be redirected to a web site where the install package is located. Choose "Save File" again like you did when installing MiKTeX.
3. Locate the installer file, which should have **TXCSetup** in the file name, and double-click it to begin installation.
4. Click **Next** in the first page of the installation wizard. Then, on the next page, select the radio button for "I accept the agreement" and click Next again.
5. Click **Next** to accept the default location for where to install TeXNicCenter.
6. Click **Next**, then **Next** again.
7. Click **Next** one more time to have a shortcut put into the Start Menu.
8. If you want an icon placed on the desktop, check the box and click **Next** again.
9. Click **Install** to start the installation process. The install should not take long.
10. Click **Finish** to exit the installer.



Part 3: Starting up TeXNicCenter for the first time

Now that you've installed TeXNicCenter and MiKTeX, there's one more thing to do. Open up TeXNicCenter (from the Start Menu or the optional icon on the desktop). You'll be given a Configuration Wizard shortly after opening the program.

1. Click on **Next** to go to the next page of the configuration wizard.
2. This step is the most technical and the most important of the entire process. You have to provide TeXNicCenter with the exact location of the MiKTeX software. There are several steps to doing this correctly:
 - (a) Click on the “...” button to call up a file explorer.
 - (b) Click on the + sign next to the C: drive (or whatever the name of the drive where you installed MiKTeX in part 1.)
 - (c) Then click on the + sign next to Program Files.
 - (d) Then click on the + sign next to MiKTeX 2.6.
 - (e) Then click on the + sign next to miktex.
 - (f) Then single-click on the folder titled bin.
 - (g) Then click **OK**.
 - (h) The complete directory path that appears in the blank should now say: C:\Program Files\MiKTeX 2.6\miktex\bin.
3. Click on **Next**.
4. Click on **Next** again to skip the three optional steps shown.
5. Click on **Finish** to complete the configuration and enter TeXNicCenter.



Part 4: View video tutorials and dive in

There are over a dozen video tutorials on LaTeX on the CD or DVD you got at the beginning of the semester. Start by viewing the two “LaTeX Basics” tutorials to find your way around the software and create your first LaTeX document. Then follow the prerequisite diagram to learn more about this software.